

FACTORY OUTLET
 37 Bosworth Road
 Woolgoolga NSW 2456
Phone: 02 6654 1888
 A/H: 0407 926 043
 Fax: 02 6654 1999
 Email: info@midnorthconcpd.com.au
 Website: www.midnorthconcpd.com.au

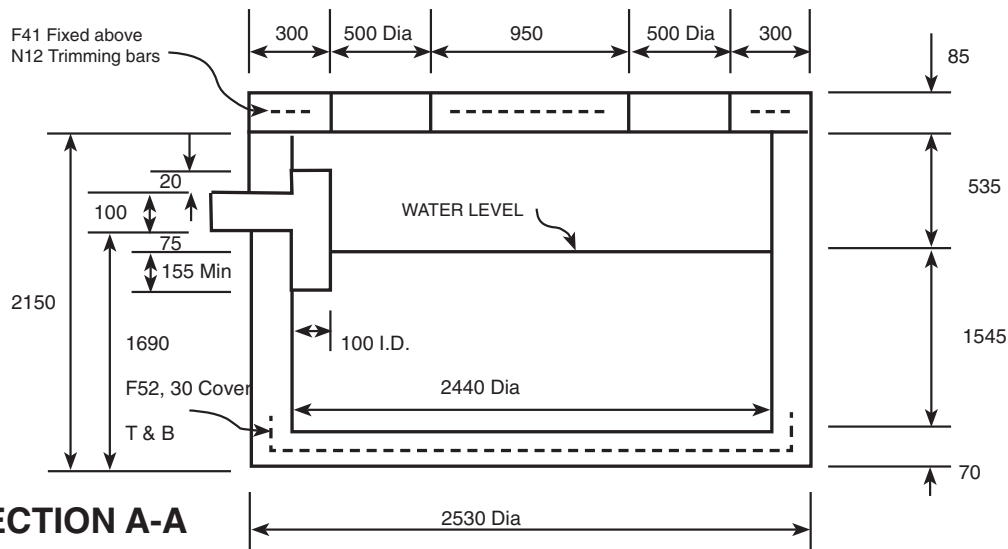
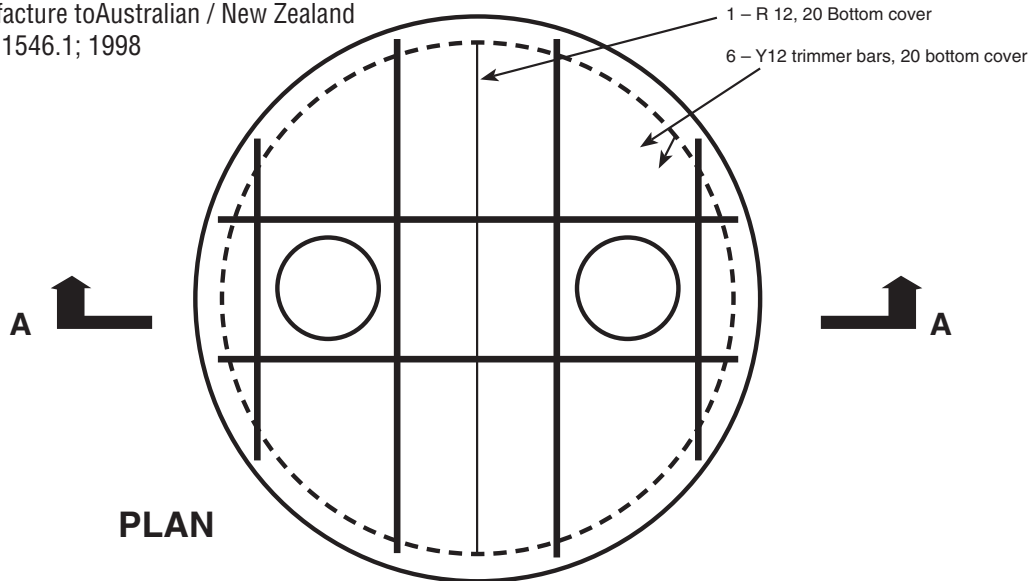
ADMINISTRATION OFFICE
 152 Port Wakefield Road
 Cavan SA 5094
 Phone: 08 8262 1042
 Fax: 08 8260 2460
 Email: admin@midnorthconcpd.com.au



Licence No. SMK1568

7000 Litre COLLECTION WELL

Accredited Manufacture to Australian / New Zealand
 Standard AS/NZS 1546.1; 1998



SECTION A-A

NOT TO SCALE

Concrete Strength	:	40 MPa
Vibration Technique	:	External Vibration
Cement	:	AS 3972
Aggregate	:	AS 2758.1
Admixtures	:	AS 1478
Steel Reinforcing	:	AS 1302, 1304, 1303
Steel Fibre	:	Min Tensile Strength 600 MPa
Top Load Test	:	To 5KN
Lifting Method	:	4 No. 2.5 Tonne swift lift Anchors at Base

All dimensions subject to change without notice.